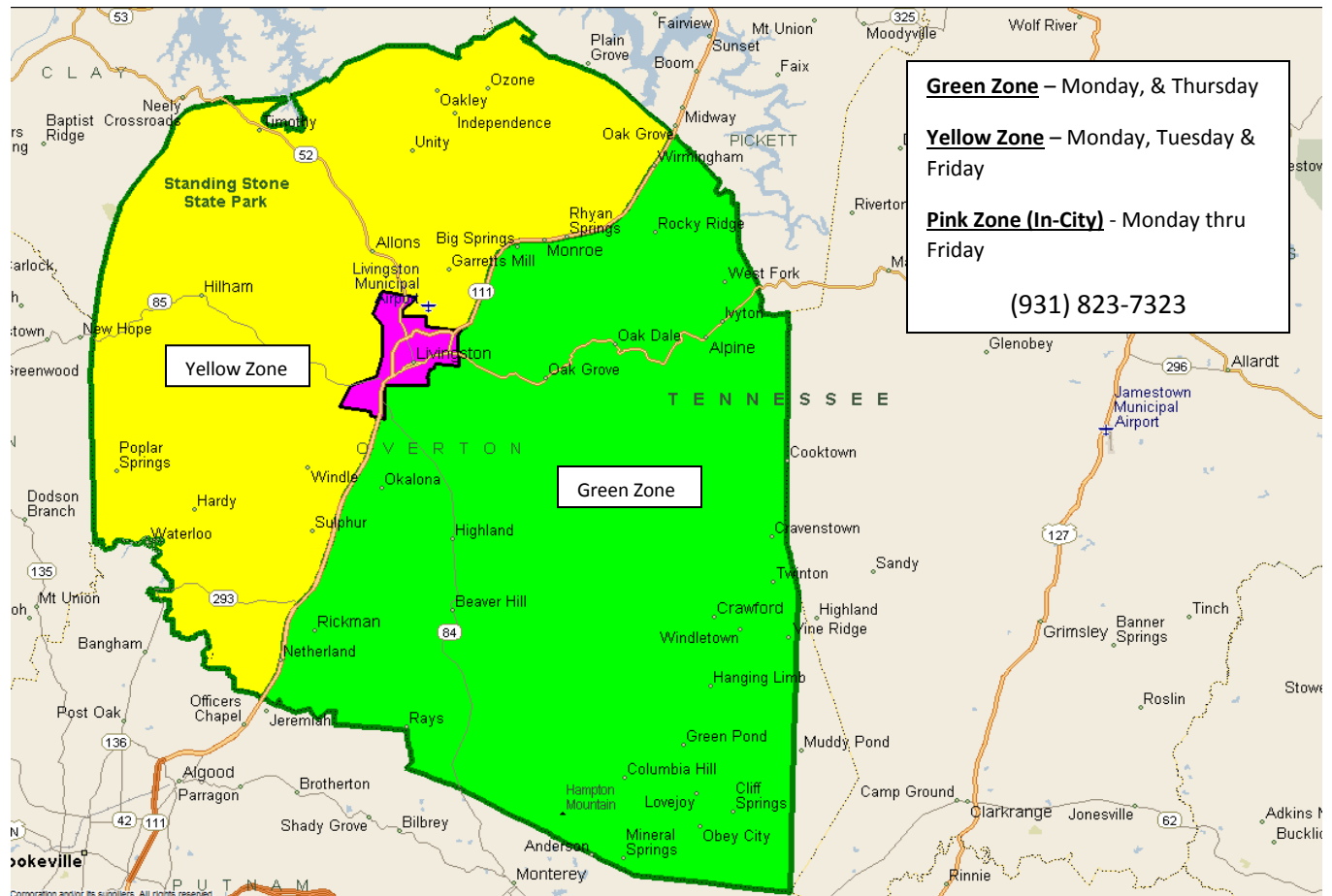


## Overton County Zone Card

### **One-Way \$1.00 Zone Days, Out of Zone Days \$2.50 upon availability**

Schedule your plans according to zones Monday - Friday 8:00 AM - 4:30 PM

Arrange your activities between the hours 10:00 AM and 2:00 PM



## Overton County Routes

Destination/Cost	Day of Week	Schedule
Crossville \$4.50 One-Way	1 <sup>st</sup> & 3 <sup>rd</sup> Wednesday of Month	Based on 1 <sup>st</sup> Appointment. Make appointment between 10:00 AM and 2:00 PM
Jamestown, \$3.50 One-Way	2 <sup>nd</sup> & 4 <sup>th</sup> Tuesday of Month	Based on 1 <sup>st</sup> Appointment. Make appointment between 10:00 AM and 2:00 PM
Byrdstown, \$2.50 One-Way	Thursday	Based on 1 <sup>st</sup> Appointment. Make appointment between 10:00 AM and 2:00 PM
Nashville (I-40 Express), \$12.00 One-Way	Monday thru Friday	Departs Livingston: 5:15, 8:15 and 11:15 AM. Returns Livingston 1:00, 4:00 & 7:00 PM
Murfreesboro, \$11.00 One-Way	Tuesday & Thursday	Departs Livingston 6:15 AM Returns Livingston 1:30 PM
Cookeville (North Feeder). \$2.50 One-Way	Monday thru Friday	Departs Livingston 8:00 AM and 11:00 AM Arrives in Cookeville 8:45 AM and 11:45 AM

Project Funded Under an Agreement with the Tennessee Department of Transportation

TDD/TTY (Telecommunication Device for the Deaf)

LEP (Limited English Service Available)

TTD Users Call 1-800-848-0298

Revised 12/5/16